



Ensuring Software SuccessSM

ALMComplete

Application Lifecycle Management

Streamline software delivery and improve quality by understanding risks, costs, and schedules

ALMComplete™ gives organizations everything they need to manage all components of the software development lifecycle, including managing customer requirements, project deliverables, test cases, defects, and support tickets across all releases, builds and sprints. Collaborative features like document sharing, team calendars, interactive dashboards, knowledge bases, and threaded discussions promote interaction across development, QA and project management teams so you can deliver solutions quickly and with higher quality.

Key Features Of ALMComplete

- ◆ Project Management
- ◆ Release Management
- ◆ Requirements Management
- ◆ Advanced Test Management
- ◆ Defect Management / Absolute Traceability
- ◆ Support Ticket Management
- ◆ Document Sharing and Discussion Forums
- ◆ Supports Waterfall and Agile Teams
- ◆ ALM Tool integrations: HP Quality Center, MS Team Foundation Server (TFS), IBM Rational Team Concert, Atlassian JIRA, Bugzilla, & many more
- ◆ Source Control System Integrations: Subversion, Perforce, Microsoft TFS and CVS
- ◆ Web-based with Major Browser Support
- ◆ Customizable to Meet Process & Compliance Requirements
- ◆ Optional HP Quality Control Conversion Tool

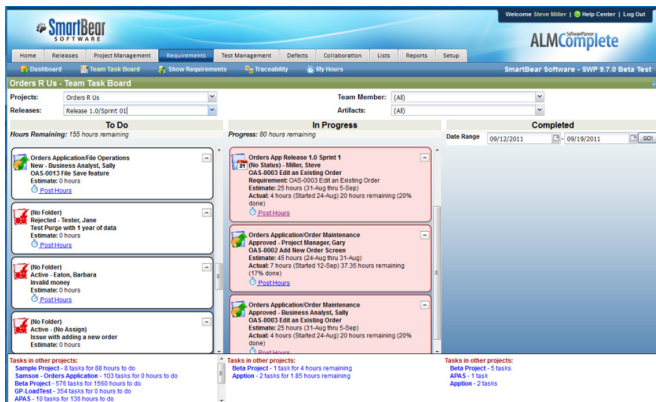
One of the best ways to iterate faster and reduce rework is to estimate effort more accurately. With ALMComplete, start with a requirement and create more discrete tasks that are easier to estimate. Learn from prior releases by comparing your estimates to actual, and buffer your estimates for better accuracy.

Project Management: Track Project Progress

ALMComplete provides real-time visibility into project and application status, including cost and schedule variances. ALMComplete helps keep teams on track with project management goals tracking (scope, schedule, and budget) by knowing the current status, expected effort, and cost (the time and expense necessary to implement requirements).

Advanced Test Management: Control Manual and Automated Test Assets Centrally

Organize, plan, and analyze manual and automated testing efforts across projects, releases, and sprints. Approach testing



strategically and assess differences in planned versus actual coverage, eliminate insufficient or redundant testing using at-a-glance views, and centrally manage tests from the Test Library. ALMComplete helps teams gain better visibility and more control over all their automated and manual testing efforts, including dynamic test-step level management.

Release Management: Make More Informed Release Decisions and Risk Assessments

Enjoy complete views of current release status and all underlying dependencies. ALMComplete gives you granular control over requirements, tasks, tests, test sets, and defects. Build quality into every iteration and course-correct quickly based on changing conditions.

Requirements Management: Get Absolute Traceability

ALMComplete provides absolute traceability between requirements, project tasks, tests, and reported defects to improve team agility. Map tests, project tasks and defects to requirements to ensure they align with user needs, even after the release plan is finalized.

Defect and Issue Tracking: Track the Progress and Resolution of Reported Defects and Issues

ALMComplete helps development and QA teams coordinate activities as bugs are found. Search features, cloning and auto-fill from recent defects make the job easier. And even better—you don't need to enter information twice. Already standardized on another defect tracking tool? Use ALMComplete with Atlassian® JIRA®, HP® Quality Center, RallyDev®, Version One®, Microsoft® TFS, Bugzilla®, Seapine® Test Track Pro®, Trac and others.

Cloud or On-Premises—You Choose.

ALM Complete is available as a SaaS Cloud model with an annual subscription. Or, choose our on-premises model with a perpetual license, annual maintenance and support.

Features			
Project Management	✓	✓	✓
Release Management	✓	✓	✓
Test Case Management	✓		✓
Advanced Test Management	✓		✓
Test Automation Integration	Multiple		Multiple
Issue/Defect Tracking	✓	✓	✓
Requirements Management	✓	✓	✓
Integration Options (Bug Trackers, Source Control, Requirements, ALM)	Multiple	Multiple	Multiple
Reporting Module Integration: Crystal Reports 2008	✓	✓	✓
Support Tickets			✓
Collaboration (Discussion Forums, Shared Documents)			✓
List Manager (Knowledge Bases, etc.)			✓
Contact + Calendar Management			✓
Web Services API	✓	✓	✓
Technical Support	Live Support	Live Support	Live Support

Vibrant User Community

The TestComplete™ user community has tens of thousands of dedicated users. Our Community offers a wealth of information and networking opportunities that help new users get up to speed quickly and connect seasoned users who tackle specific testing challenges. An extensive library of documentation, application notes and How To's, technical articles, and on-demand Webcasts is complemented by our friendly and knowledgeable TestComplete support group to keep you up and running. Join in at www.smartbear.com/community/.

Try ALMComplete Free for 30 Days

Scan and download your free trial to see why users choose SmartBear to improve software quality.



About SmartBear Software

SmartBear Software provides enterprise-class yet affordable tools for development teams that care about software quality and performance. Our collaboration, performance profiling, and testing tools help more than 100,000 developers and testers build some of the best software applications and websites in the world. Our users can be found in small businesses, Fortune 100 companies, and government agencies. For more information about SmartBear Software, our award-winning tools, or to join our active user community, visit www.smartbear.com.

