



Ensuring Software Success<sup>SM</sup>

# QAComplete QA, Test and Release Management

Dynamic test-step level management. Centralized reporting across manual and automated tests.

Take the guess work out of the software delivery lifecycle. Manage testing assets centrally. Empower QA and development teams to take a more proactive approach to testing and release management activities. Understand differences in planned versus actual coverage and eliminate redundant or insufficient testing with at-a-glance views.

## Key Features Of QAComplete

- ◆ Requirements Management
- ◆ Advanced Test Management
- ◆ Release Management
- ◆ Integrated Automated Testing with TestComplete and QuickTest Pro
- ◆ Defect Management / Absolute Traceability
- ◆ ALM Tool Integrations: HP Quality Center, MS Team Foundation Server (TFS), IBM Rational Team Concert, Atlassian JIRA and Bugzilla
- ◆ Source Control System Integrations: Subversion, Perforce, Microsoft TFS and CVS
- ◆ Web-based, Supports all Major Browsers
- ◆ Customizable to Meet Testing, Quality & Compliance Requirements
- ◆ Optional HP Quality Center Conversion Tool

## Ensure Software Quality with Advanced Test and Release Management

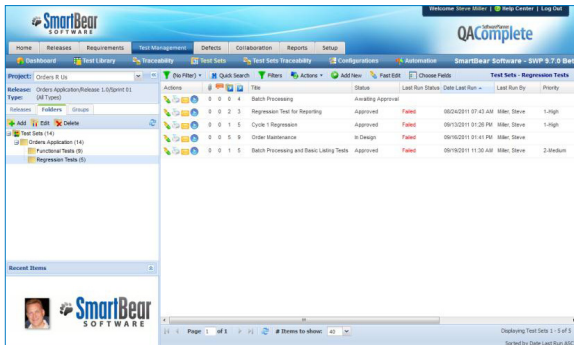
Use QAComplete™ to be more strategic. Prioritize testing based on the importance of customer requirements and risk, plan coverage, and control test execution. Effective test management helps ensure that you're running the right tests and that you avoid releasing an application that is not customer-ready.

- ◆ Centralized Test Library: Store, modify, and reuse tests fast
- ◆ Absolute traceability: Requirements to tests to release
- ◆ Test and Release Management for visibility and control
- ◆ Complete control at the test-step level

## Test Automation

QAComplete supports many automated testing tools, including AutomatedQA™, TestComplete™ and HP® QuickTest Pro. Integrate automated testing with QAComplete to:

- ◆ Review and compare automated test run histories across machines
- ◆ Coordinate manual and automated testing effort to make better informed release decisions
- ◆ Launch tests directly from your automated tool and automatically report the run results to QAComplete for analysis over time
- ◆ Share results across the team and trend results using dashboards



### Defect Management

QAComplete allows you to track status and resolution progress of defects and issues for each release. Instead of spending time entering data, QAComplete automatically generates a defect identifier on failed test cases, so testers can invest their time in running tests, not administration. Providing integration with leading defect tools like Atlassian® JIRA®, Bugzilla®, and other Web-based defect tracking tools, you can quickly incorporate QAComplete into your existing defect tracking processes.

### Requirements Management

QAComplete helps you manage requirements regardless of your team’s development methodology. Define requirements for each release and track the release for which each requirement is scheduled. Workflow configuration allows users to define their own requirement statuses and add custom workflow rules (like automated assignment and state transition rules). Integrated linking with test cases delivers clear requirements test coverage reports.

### Absolute Traceability

The goal of traceability is to ensure “adequate” test coverage for each software requirement. Maintaining traceability, both forward and backward, from requirement to test case and from test case to requirement, ensures that design specifications are appropriately verified and that requirements are appropriately validated. Absolute traceability reduces software defects and improves code quality.

- ◆ Link together requirements, test cases, and reported defects.
- ◆ Drag and drop functionality to link test cases or defects to a requirement.
- ◆ With one click, see a traceability report showing all linkages to a particular requirement.

	QAComplete	DevComplete	ALMComplete
<b>Features</b>			
Project Management		✓	✓
Release Management	✓	✓	✓
Test Case Management	✓		✓
Advanced Test Management	✓		✓
Test Automation Integration	Multiple		Multiple
Issue/Defect Tracking	✓	✓	✓
Requirements Management	✓	✓	✓
Integration Options (Bug Trackers, Source Control, Requirements, ALM)	Multiple	Multiple	Multiple
Reporting Module Integration: Crystal Reports 2008	✓	✓	✓
Support Tickets			✓
Collaboration (Discussion Forums, Shared Documents)			✓
List Manager (Knowledge Bases, etc.)			✓
Contact + Calendar Management			✓
Web Services API	✓	✓	✓
Technical Support	Live Support	Live Support	Live Support

### Cloud or On-Premises – You Choose!

SaaS Cloud or On-Premises delivery models.

- ◆ SaaS Cloud model with an annual subscription
- ◆ On-Premises model with a perpetual license and annual maintenance and support

 **Try QAComplete Free for 30 Days**

Scan and download your free trial to see why users choose SmartBear for test case management.



### About SmartBear Software

SmartBear Software provides enterprise-class yet affordable tools for development teams that care about software quality and performance. Our collaboration, performance profiling, and testing tools help more than 100,000 developers and testers build some of the best software applications and websites in the world. Our users can be found in small businesses, Fortune 100 companies, and government agencies. For more information about SmartBear Software, our award-winning tools, or to join our active user community, visit [www.smartbear.com](http://www.smartbear.com).

